



GLOBAL
FIRE EQUIPMENT

GLOBALFIRE.PT

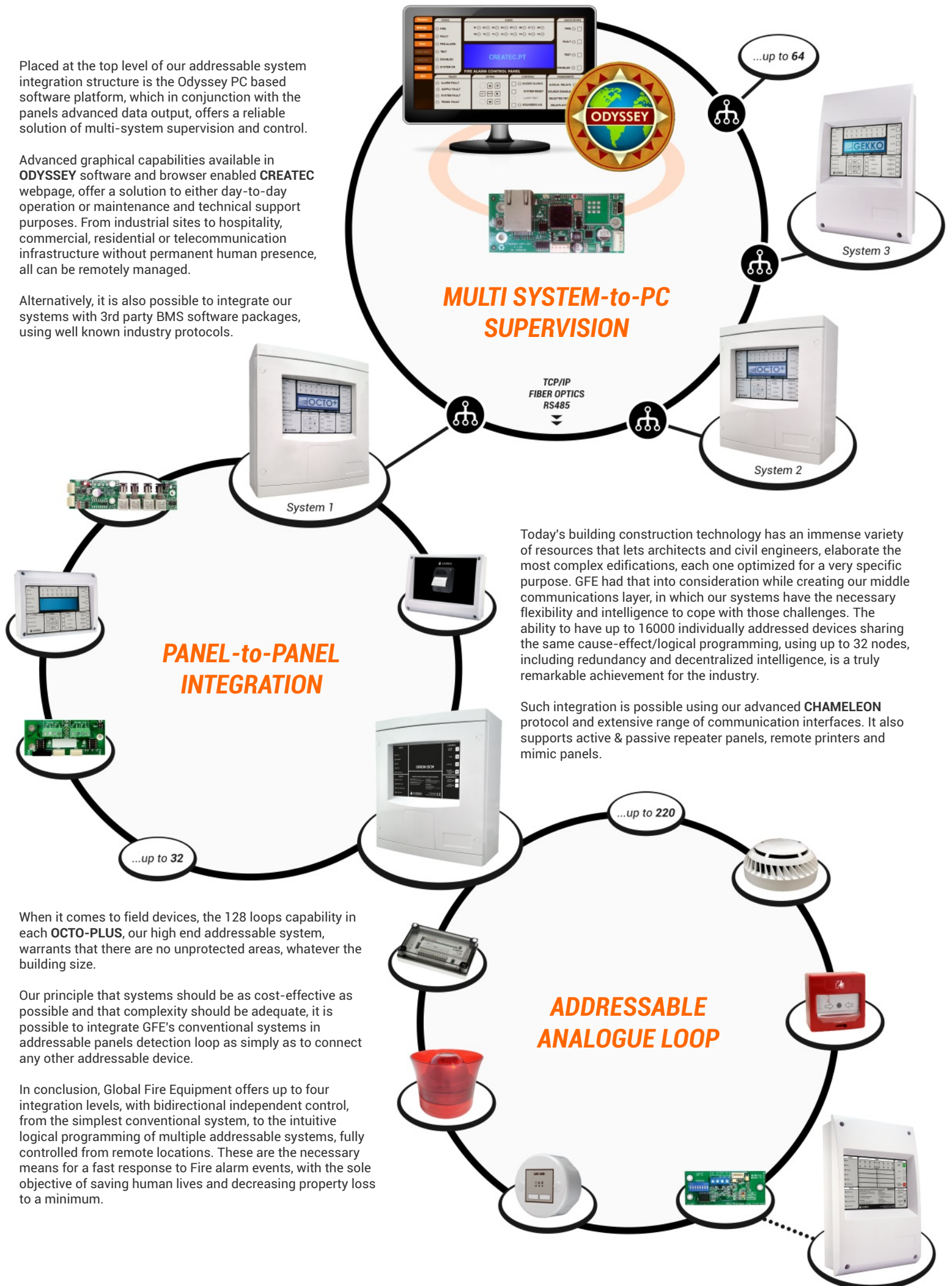
**MANUFACTURERS
OF FIRE DETECTION
EQUIPMENT**

SYSTEM OVERVIEW

Placed at the top level of our addressable system integration structure is the Odyssey PC based software platform, which in conjunction with the panels advanced data output, offers a reliable solution of multi-system supervision and control.

Advanced graphical capabilities available in **ODYSSEY** software and browser enabled **CREATEC** webpage, offer a solution to either day-to-day operation or maintenance and technical support purposes. From industrial sites to hospitality, commercial, residential or telecommunication infrastructure without permanent human presence, all can be remotely managed.

Alternatively, it is also possible to integrate our systems with 3rd party BMS software packages, using well known industry protocols.



Today's building construction technology has an immense variety of resources that lets architects and civil engineers, elaborate the most complex edifications, each one optimized for a very specific purpose. GFE had that into consideration while creating our middle communications layer, in which our systems have the necessary flexibility and intelligence to cope with those challenges. The ability to have up to 16000 individually addressed devices sharing the same cause-effect/logical programming, using up to 32 nodes, including redundancy and decentralized intelligence, is a truly remarkable achievement for the industry.

Such integration is possible using our advanced **CHAMELEON** protocol and extensive range of communication interfaces. It also supports active & passive repeater panels, remote printers and mimic panels.

When it comes to field devices, the 128 loops capability in each **OCTO-PLUS**, our high end addressable system, warrants that there are no unprotected areas, whatever the building size.

Our principle that systems should be as cost-effective as possible and that complexity should be adequate, it is possible to integrate GFE's conventional systems in addressable panels detection loop as simply as to connect any other addressable device.

In conclusion, Global Fire Equipment offers up to four integration levels, with bidirectional independent control, from the simplest conventional system, to the intuitive logical programming of multiple addressable systems, fully controlled from remote locations. These are the necessary means for a fast response to Fire alarm events, with the sole objective of saving human lives and decreasing property loss to a minimum.

ADDRESSABLE PANELS



The **OCTO-PLUS** Fire Alarm Control Panel, builds on the pedigree of the worldwide known JUNO NET. It introduces a full peer to peer networking solution which enables extreme resilience in very large networked systems.

Key Features:

- Peer-to-Peer Advanced Networking Protocol up to 32 Nodes (4 loops per node)
- **Chameleon** networking protocol uses fully redundant physical layers which can use either Rs422, TCP/IP or Fibre optic mediums
- 4 loops per Node, maximum of 128 loops per system
- Aluminum back box, reversible door for side-by-side installation and removable chassis
- 240x64 Graphical display, that can accommodate any type of custom characters or graphic symbols, allowing multi-language support, as well as pictorial and customisable elements
- BMS Graphical software integration support
- Web enabled for remote connection.



The **GEKKO** Fire Alarm Control Panel is the successor of the enormously popular GFE JUNIOR panel of which tens of thousands have been installed all over the world.

In line with the architecture chosen for the high end OCTO-PLUS expandable panel, the GEKKO can have from 1 to 4 addressable loops but without peer to peer networking.

Key Features:

- Flame retardant ABS plastic enclosure, with only two screws used to close and secure the lid
- BMS integration support. ODYSSEY software or 3rd party via open protocol
- 100% synchronization of all sounders in any given loop
- Web enabled for remote connection.



CONVENTIONAL PANELS



The **ORION** conventional control panel range offers a creatively designed and visually pleasing solution for smaller cost-conscious projects demanding simplicity of operation. Versions available include 1, 2, 4 and 8 zone panels and two styles of repeater.

The outstanding programmable features included in this panel range supplement the facilities commonly available in this type of panel and include: programmable time delay by zone, Day Night mode and double-knock detection.

Key Features:

- Seamless integration with addressable systems via ADLI interfaces
- non-latching zones
- double-knock Alarm
- Multiplexed zonal relay and sounder boards
- Optional dual level zonal alarm.



Our offer of Extinguishing Systems based on existing technologies aims to provide a simple and cost effective solution, while complying with the majority of requirements and standards.

Key Features:

- 3 Zone conventional panel with the standard signal inputs and outputs required in a single extinguishing panel
- Pressure/weight monitoring input
- Abort Callpoint and Door Control monitored inputs
- Two independent sounder outputs for staged notifications
- Monitored output for several extinguishing release methods (solenoid, pyrotechnic)
- Integration with addressable systems via ADLI interface.

GRAPHICAL SOFTWARE



The multi-language **ODYSSEY** graphical software gives you the possibility to control up to 64 Addressable systems. In multi-building installations like industrial parks, tourist resorts, it is almost mandatory to have centralized control over the several fire detection systems and the graphical environment makes it simple to operate and monitor any installation of that type.

The configuration mode is password protected and device placement is made by drag & drop, with their associated descriptions being sent automatically by the panel. Interaction with each panel is made through a template of the panel fascia as if you were physically in front of it.

When a Fire or Fault occurs, the location of the incident is displayed in the PC monitor and with just two clicks of a mouse, the zoom to the zone in alarm is accomplished, providing information of the triggering device.

Using the built-in emergency phone number list or through the automated email/SMS dispatch, the operator can adequately respond to each situation. The printable event log will help you with any diagnostic and/or maintenance check.

A demo version is available where you can explore the software capabilities by operating a dummy installation, after all, "seeing is believing".



Several support software are available in our website.

GFE CONNECTOR and the new **CONNECTOR+** are the tools to program and set-up JUNIOR V4, GEKKO and OCTO-PLUS systems.

LOOP CALCULATOR is a remarkable tool that will help both project engineers and specifiers, as well as installers needing to check installation conditions and battery requirements.

VOX LOADER enables the recording and configuration of VOX sounder voice messages.

FIELD DEVICES

DETECTOR

The **ZEOS** range of detectors covers both standard conventional models for compatibility with other systems, and fully analogue addressable models for use with our own advanced communications protocol.



In order to offer both high value and good reliability, the devices feature simple electronics, highly advanced optical chamber design and advanced detection & discrimination algorithms.

Key Features:

- Clean aesthetics and low profile
- Model differentiation using Led flashing patterns
- Hard and soft addressing variants
- Built-in short-circuit loop isolator
- Programmable Multi-criteria modes available in ZEOS range
- Selectable Rate-of-Rise in heat models
- 3 mounting options.

Compliance to EN54 pts 5 and 7 are 3rd party approved, in order to ensure CPR requirements are met.



SPECIALTY DETECTORS

Please go to our website www.globalfire.pt to check our range of Flame, Optical Beam, Aspiration and Linear Heat detectors.

MANUAL CALL POINTS

Our manual call point MCPE range features two important benefits:

1. The resettable frangible element means that there is no breakable glass to be replaced after each activation.

2. A bi-colour LED status indicator for both addressable and conventional models gives a green flashing LED to signal normal operation and a steady red LED to indicate an alarm activation.



Additional Features:

- Flush or surface mount versions including a low profile model.
- Protective flap to help avoid accidental or malicious activation.
- IP54 to IP67 ratings allow installation in demanding environmental conditions.
- Optional in-built loop short circuit isolator for addressable systems.
- Five available colors for specific applications.
- Specific models for extinguishing applications.
- Anti-tamper protection options.



SOUNDERS

Our stylish range of base-mount and wall-mount sounders offer optional visual flashing indication and are available in both Red and White. Due to the very low current consumption in alarm, which can be as low as 2.5 mA in addressable models, a maximum of 96 sounders may be connected to a single loop. All sounders have four selectable alarm tones and volume adjustment. A highly advanced multi-language voice messaging range is also available.

Below distinct line-ups are available:

- The **VULCAN 3** base-mount range may be combined with a detector in order to reduce installation costs. A maximum of 96 sounders or 64 combined sounder/beacons may be connected to a single loop depending on the total loop loading.
- The **VALKYRIE** wall-mounted sounder is available in either Red or White and weatherproof IP65 rating. A maximum of 32 standard mode addressable sounders may be installed per loop or available on request the shadow mode sounder may be utilized in order to free up addresses for additional detection devices. The traditional horn type sounder design offers a very high sound output level and directional sound projection.
- The **VOX** sounders offers a versatile Voice Evacuation solution with up to 5 different voice messages controlled by the addressable panel. These voice messages may be easily customized to suit individual site requirements by recording to PC and downloading via USB. Loop powered and power-amplifier (external speaker) versions are available for addressable or conventional systems.

Few manufacturers are able to offer such a powerful and flexible alarm signaling solution for your fire detection systems.



COMMUNICATION INTERFACES

These provide translation and control of the existing communication layers within our systems. Check the graphical overview of our addressable systems for a visual representation.



- **RS422/485:** redundant communications and enhanced diagnostics facilities, both for **Chameleon P2P** network and PC based software tools used in Building Management and Integration Systems.
- **FIBRE OPTICS:** multimode and singlemode variants are available for large networked systems and total immunity against electromagnetic interferences. Mixed FO and RS422 versions increase installation flexibility. Singlemode makes it possible to use existing IT infrastructure available in most complex sites.
- **TCP/IP:** The chosen solution for PC integration and web monitoring.



POWER SUPPLIES

Our range of power supplies and battery charger modules have full operation & fault monitoring functions. In addition, we are also able to offer versions of our power supply units with inbuilt interface facilities to provide monitoring and control of external systems, all communicating via the addressable loop circuit for ease of connection.

Key Features:

- Optional built-in relay operation via addressable loop to control external devices such as door holders
- Built-in conventional sounder circuit with local operation.

MODULES

We recognize that the interfacing requirements of a fire alarm to other types of system can vary massively from site to site, and following many years of client feedback our wide range now covers the following categories:

- **I/O Modules**, mainly loop powered devices that allow connection of external equipment to the loop of our addressable panels, i.e., sprinkler flow switches, electrical distribution panels, fire doors, elevator disablement, gas shutoff valves, HVAC control, etc.
- **Zone Monitors and Sounder controllers**, to enable integration of conventional devices and retrofitting of conventional systems.
- **Protection Modules**, system protection in the form of loop isolation in the case of short circuit is easily overlooked but is exceptionally important in order to achieve a high level of system integrity. The range of loop isolation devices available includes both stand-alone and integrated options built in to our call-points, sounders, I/O modules and detectors.



**THE WAY
WE LEAD**

Building on a long tradition of excellence in the field of Fire Alarm Control Panels, **Global Fire Equipment**, founded in Denmark by João Paulo Ajami, has experienced a remarkable organic growth both in turnover and customer numbers since 1994 and is now a world player, supplying customers across 85 countries with state of the art equipment, installed in prestigious premises. Based in a 9000sqm purpose built manufacturing facility (2019) in the Algarve region of Portugal, **GFE designs, manufactures and exports a complete range of Fire Detection Products and puts customer satisfaction at the top of its priorities.**



GLOBAL
FIRE EQUIPMENT

GLOBAL FIRE EQUIPMENT S.A.

Sítio dos Barrabés, Armazém Nave Y, CP908-Z
8150-016 São Brás de Alportel - PORTUGAL
TEL: +351 289 896560
E-MAIL: sales@globalfire.pt
www.globalfire.pt



AUSTRALASIA

GLOBAL FIRE EQUIPMENT
PHILIPPINES CO. LTD.
sales@globalfire.ph
www.globalfire.ph

CAUCASUS

GFE BINA KONTROL
SISTEMLERİ LTD. - TURKEY
satis@gfe.com.tr
www.globalfire.com.tr

MIDDLE EAST & NORTH AFRICA

GLOBAL FIRE EQUIPMENT LTD. (FZC)
JORDAN
sales.mena@globalfireequipment.pt
www.globalfire.pt

SOUTHEAST ASIA

GLOBAL FIRE EQUIPMENT (S.E.A.)
SDN BHD - MALAYSIA
sales@globalfire.my

UGANDA

GF EQUIPMENT LIMITED
geral@globalfireafrica.com
www.globalfire.pt

UNITED KINGDOM

GLOBAL FIRE EQUIPMENT UK
office@globalfireequipment.co.uk
www.globalfireequipment.co.uk