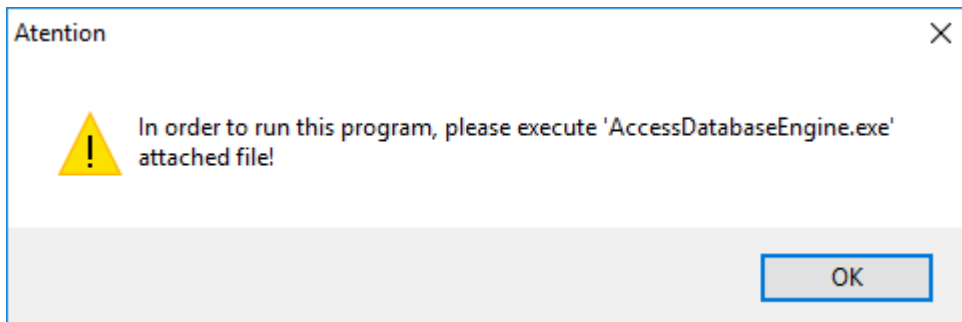


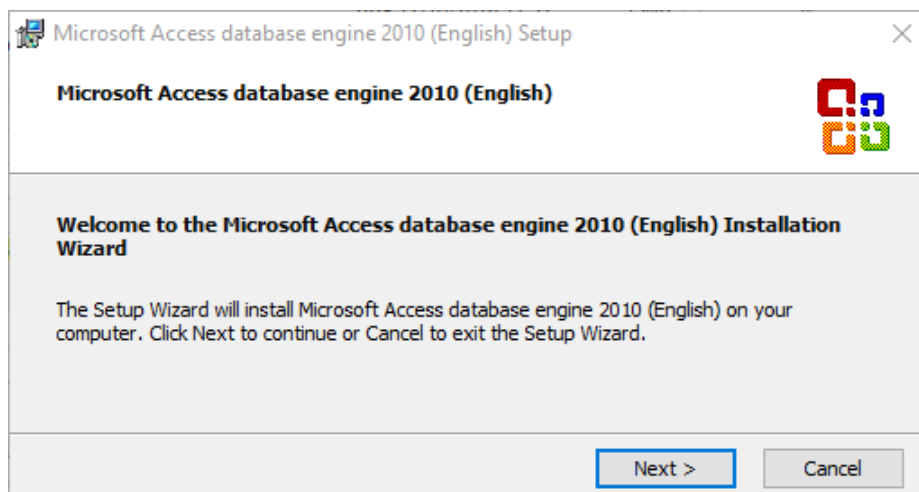
A new version of Loop & Battery Calculator software is available for download.

Please [download](#) new version from our website and follow below instructions:

1. Execute 'GFELoopSetup3.2.3.exe' file.
2. If below message appears when running software.

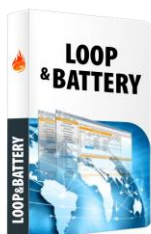


3. Execute 'AccessDatabaseEngine.exe' file.



NOTE: use default options during Setup process.

4. Execute Loop Calculator software.



LOOP & BATTERY CALCULATOR

can be downloaded [here](#).

For additional clarification please contact a local [distributor](#) or use our [contact form](#).

GLOBAL FIRE EQUIPMENT S.A.

Sítio dos Barrabés, Armazém Nave Y, Caixa Postal 908-Z, 8150-016 São Brás de Alportel - PORTUGAL
Tel: +351 289 896 560 • Sales: sales@globalfire.pt • Technical Support: techs@globalfire.pt • www.globalfire.pt