

**Valuable customers and users of GFE addressable systems, please download latest GFE Connector software version.**

Newer version (V7.0.3) has several usability enhancements and enables programming of new panel features, namely:

- **Features available only for ZEOS detector range:**
  - **Blinking LED operation control,**
  - **ZEOS multi-sensor (SH & SHI) modes.**
- **Extended delay for Sounders & I/O modules,**
- **Sounder groups loop indication increase according to panel address,**
- **Project converter tool between ZEOS & GFE detector ranges,**
- **Device label input auto increase (DEVICE LIST tab),**
- **Zone text label visible in Device Tab,**
- **Turkish and French languages addition.**

Above options will be available in panels shipped from 21<sup>st</sup> of February onwards.

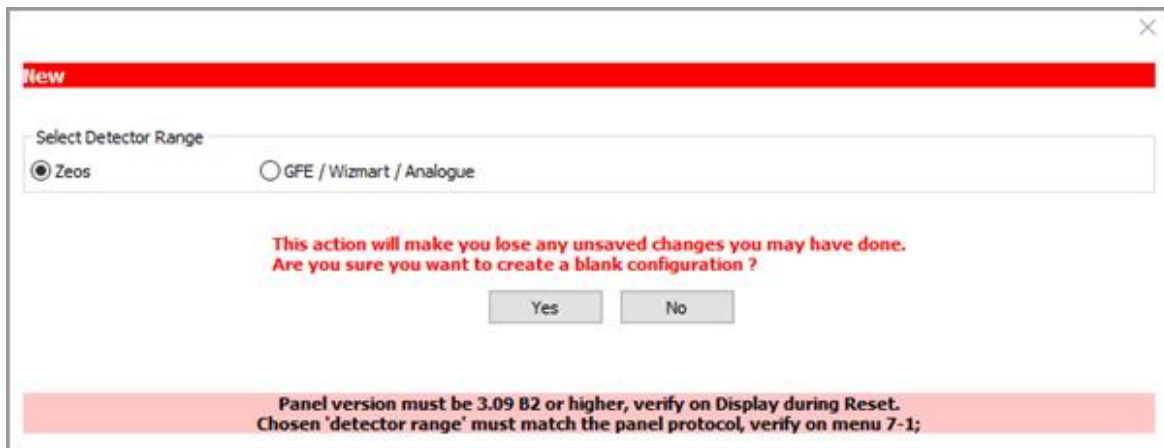
- **Panels can be easily identified during panel Reset.**



New ZEOS features are available when below conditions are fulfilled:

1. **GFE Connector software:**

- ‘ZEOS Detector range’ selected when creating new configuration.



- Convert previous files to ‘ZEOS’ with ‘Convert Project’ tool.

2. **Panel:** ‘ZEOS’ must be visible in menu 7-1.

---

### IMPORTANT NOTE:

Upload/download routines with GFE Connector software will only start, if detector range selection of panel and software are identical. Failure to do so will trigger an error message in GFE Connector software.

---

For additional clarification please contact a local [distributor](#) or use our [contact form](#).

## GLOBAL FIRE EQUIPMENT S.A.

Sítio dos Barrabés, Armazém Nave Y, Caixa Postal 908-Z, 8150-016 São Brás de Alportel - PORTUGAL  
Tel: +351 289 896 560 • Sales: [sales@globalfire.pt](mailto:sales@globalfire.pt) • Technical Support: [techs@globalfire.pt](mailto:techs@globalfire.pt) • [www.globalfire.pt](http://www.globalfire.pt)